

# QCPF-MB-M46

## SMP Connector, DC~18GHz

## Features:

- \* Low VSWR

### Applications:

- \* Wireless
- \* Radar
- \* Instruments
- \* Electronics

## Electrical

Frequency:	DC~18GHz
Impedance of Dielectric:	5000MΩ min.
Voltage Withstand:	500V DC
Impedance:	50Ω

## Mechanical

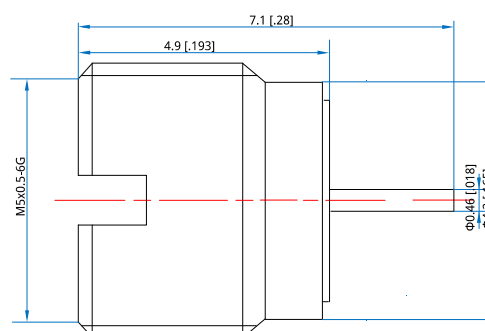
RF Connector:	SMP male
Outer Conductor:	Gold <sup>1</sup> plated beryllium copper
Dielectric:	PTFE
Inner Conductor:	Passivated 316L Stainless Steel
Mold Prevention:	28 h
Salt Fog Prevention:	96 h
Other:	waterproof

[1]Gold1.27

## Environmental

Temperature: -55~+125°C

## Outline Drawings



Unit: mm [in]

Tolerance:  $\pm 0.2\text{mm}$  [ $\pm 0.008\text{in}$ ]

## How To Order

QCPF-MB-M46-01

Customization is available upon request.